

About CRISP

CRISP is established under the Indo-German Technical Cooperation Agreement as an autonomous organization of the Dept. of Technical Education, Skill Development & Employment, Govt. of M.P.

CRISP provides technical training and consultancy services for Industry Personnel, Government Officers, Faculties of Academic & Training Institutions, Students & Jobseekers. CRISP is equipped with the state-of-the-art labs & technology, latest software, qualified, trained and experienced trainers in the relevant fields.

Other training programmes in CS/IT :

AI & Data Science:

- AI & ML
- Advance Data Analytics

Office Management With AI:

- MS Office/Open Office
- Advanced Exce
- ITally Prime

Programming Languages:

- C & C ++
- Java(J2SE)
- CISCO Programming Essentials in Python

Networking & Cyber Security:

- CISCO IT Essentials (PCRM & Networking)
- CISCO Networking Essentials
- CISCO CCNA
- CISCO Cyber Security Essentials

Database Management:

- ORACLE (OCA)

Web Designings:

- Web Development with Python & Django



Patron Clients of CRISP



Contact :

Sr. Manager (Marketing)

Mr. Faisal Jafri

Mobile : 9826334406

email : faisal@crispindia.com

Course Co-ordinator

Ms. Kaushiki Upadhyaya

Mobile: 9820241349

email : kaushiki@crispindia.com

Centre for Research and Industrial Staff Performance

(Established under Indo-German Technical Co-operation)

Opp. Manas Bhawan, Shyamla Hills, Bhopal- 462002

Phone : +91 755 2661401, 2661677

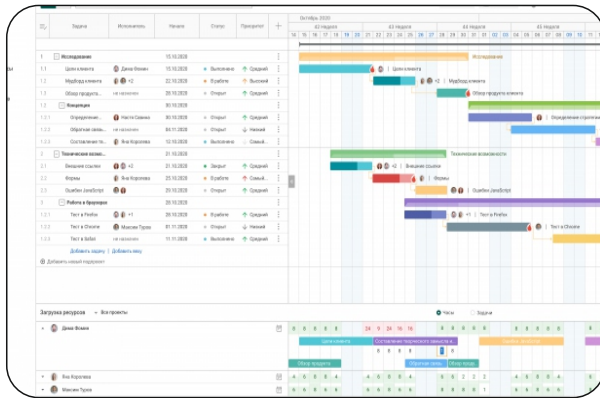
www.crispindia.com

Advanced Data Analytics



...unleashing the full potential of men & machines

Advanced Data Analytics



Introduction of Course

Microsoft Project is a project management software program developed and sold by Microsoft, designed to assist a project manager in developing a schedule, assigning resources to tasks, tracking progress, managing the budget, and analyzing workloads.

Project creates budgets based on assignment work and resource rates. As resources are assigned to tasks and assignment work estimated, the program calculates the cost, equal to the work times the rate, which rolls up to the task level and then to any summary task, and finally to the project level.

Each resource can have its own calendar, which defines what days and shifts a resource is available. Microsoft Project is not suitable for solving problems of available materials (resources) constrained production. Additional software is necessary to manage a complex facility that produces physical goods.

Course Contents

Excel

- Consume,
- Transform and model Data using Advance Excel techniques

Python Programming core Constructs

- Data type variable,
- Operators,
- Basic input output,
- Conditional loops,
- Functions,
- Lists and dictionaries.

Python programming Advance

- Analytics with libraries like NumPy,
- Pandas matplotlib and seaborn

SQL for Data Analysis

- SQL Queries,
- Joins,
- Aggregation,
- Views and Stored Procedures

Tableau

- Introduction,
- Data Control and preparation,

- Grouping,
- Sorting,
- Aggregation and Heat Maps,
- Visualization,
- Date based Analyse,
- Table Calculations,
- Advanced filtering,
- Advanced maps,
- Dashboard Actions and Animation.

Power BI

- Introduction to Business Intelligence Power BI Desktop,
- Transform, Clean,
- Shape, and Model Data,
- Manage Data Relationship,
- Editing a Relationship,
- Cross Filter,
- Saving Work file,
- Measures,
- DAX and Visualization

Methodology

The programme consists of a mix of :

- Lectures and presentations
- Demonstrations
- Interactive discussions
- Hands-on practice

Pre-requisite

- Industry personnel with relevant experience
- Commerce background
- Knowledge of accounts and computer

Duration

Full time : 5 working days (8 hours/day)

Part time: 4 weeks (20 working days, 2 hours/day)

Course Fee

Corporate participant: Rs.20,000/- (Non Residential) + GST
Fee will be subsidized for Jobseekers/students

Mode of Payment

Cash / UPI/ Online/ Debit/ Credit Card